

# NEWCASTLE

## Newsletter Announcement

10/20/2022

Dear Homeowners,

The Newcastle Re-pipe project started Monday, October 17, 2022. Attached are scans of the condo layouts with the highlighted areas where work will be done. **Please read the attached FAQs explaining what to expect during, before and after the project.** Preparing a day before your scheduled date would avoid issues as we proceed, and the work can begin more efficiently when the Aztec crews get onsite.

**If you are concerned about debris on your furniture, please cover it up or move it in a room where there are no adjacent plumbing fixtures.**

### **WHAT ABOUT MY WATER?**

The re-pipe project includes replacing all water lines no drain lines, the work will be completed in one day and water will be running by the end of the day.

### **WHAT DO I NEED TO DO BEFORE THE REPIPE IS DONE?**

The water distribution system travels through the walls and terminates at a valve under the sink cabinets, behind toilets, and in the wall behind the shower valve, washer box, and ice maker; (if applicable). **The Re-pipe crew will need all your personal items removed from the bottoms of the cabinets, and from around the toilet, and in the tubs and or shower area. Any items around the washer should also be moved. In most cases, the Re-Pipe crew will be able to move the washer and refrigerator to access the valves.**

### **PRIOR TO THE ARRIVAL OF THE RE-PIPE CREW:**

- a. Remove Pictures, Artwork that may fall off walls during the re-pipe.
- b. Remove furniture, rugs or ANY other items that could be damaged by Drywall Dust, or difficult to clean dust from.
- c. Remove Pictures, Artwork, etc. that could be damaged.
- d. Remove Personal items from under the kitchen sink cabinet, the bathroom sink cabinet, around the toilet, in the tubs and showers.
- e. Remove small items from around the washer, on top of the refrigerator, around the water heater.

If you are ready to be put on the list for scheduling, please contact Scarlett Fernandez via email at [sfernandez@vestapropertyservices.com](mailto:sfernandez@vestapropertyservices.com) or call 239-747-7227. If you have any additional questions regarding details of the project, please ask the receptionist to transfer you to Scarlett.

**Below you'll find two YouTube videos done by Aztec plumbing regarding re-pipe work.**

<https://www.youtube.com/watch?v=IW5i4pjGkM>

**Office Hours: Monday – Friday (8:30 AM – 4:30 PM)**

**After Hours (Only emergency calls will be dispatched to the Property Manager, otherwise it will have to wait the next day) – 239-747-7227.**

**Company Policy: 24 – 48 hours to return phone calls and emails.**

**Emergency calls will take priority.**

# Newcastle Re-pipe Project Readiness

Updates as of: 10/20/2022

Volunteered=	
Ready=	
In Progress=	
Completed=	

600 Squire Cir

201	202	203	204
101	102	103	104

700 Landover Cir

201	202	203	204
101	102	103	104

605 Squire Cir

201	202	203	204
101	102	103	104

708 Landover Cir

201	202	14-Nov 203	204
101	102	14-Nov 103	104

608 Squire Cir

201 Dec	202	203	204
101	102	103	104

709 Landover Cir

17-Oct 201	18-Oct 202	20-Oct 203 <small>Re-scheduled</small>	19-Oct 204
17-Oct 101	18-Oct 102	20-Oct 103 <small>Re-scheduled</small>	19-Oct 104

613 Squire Cir

201	202	203	204
101	102	103	104

716 Landover Cir

14-Nov 201	15-Nov 202	16-Nov 203	17-Nov 204
14-Nov 101	15-Nov 102	16-Nov 103	17-Nov 104

621 Squire Cir

201	202	203	204
101	102	103	104

717 Landover Cir

201	202	203	204
101	102	103	104

629 Squire Ct

201	202	203	204
101	102	103	104

721 Landover Ct

201	202	203	204
101	102	103	104

# Newcastle Re-pipe Project Readiness

Updates as of: 10/20/2022

Volunteered=	
Ready=	
In Progress=	
Completed=	

637 Squire Ct

201	202	203	204
101	102	103	104

725 Landover Ct

201	202	203	204
101	102	103	104

645 Squire Ct

27-Oct 201	28-Oct 202	31-Oct 203	21-Oct 204
27-Oct 101	28-Oct 102	31-Oct 103	21-Oct 104

729 Landover Ct

201	202	203	204
101	102	103	104

653 Squire Cir

201	202	203	204
101	102	103	104

733 Landover Ct

201	202	203	204
101	102	103	104

654 Squire Cir

201 Jan	202	203	204
101 Jan	102	103	104

737 Landover Ct

201	202	203	204
101	102	103	104

661 Squire Cir

21-Nov 201	24-Oct 202	25-Oct 203	26-Oct 204
21-Nov 101 No email	24-Oct 102	25-Oct 103	26-Oct 104

738 Landover Cir

201	202	203	204
101	102	103	104

662 Squire Cir

8-Nov 201	9-Nov 202	10-Nov 203	3-Nov 204
8-Nov 101	9-Nov 102	10-Nov 103	3-Nov 104

741 Landover Cir

201	3-Nov 202	4-Nov 203	7-Nov 204
101	3-Nov 102	4-Nov 103	7-Nov 104

3rd

4th

# Newcastle Re-pipe Project Readiness

Updates as of: 10/20/2022

Volunteered=	
Ready=	
In Progress=	
Completed=	

--	--	--	--

--	--	--	--

669 Squire Cir

201	202	203	204
101	102	103	104

744 Landover Cir

201	202	203	204
101	102	103	104

677 Squire Cir

201	202	203	204
101	102	103	104

745 Landover Cir

201	202	203	204
101	102	103	104

685 Squire Cir

201	202	203	204
101	102	103	104

749 Landover Cir

201	202	203 Last one
101	102	103 Last one

7th

686 Squire Cir

201	202	203	204
101	102	103	104

752 Landover Cir

201	202	203	204
101	102	103	104

8th

768 Landover Cir

201	202	203	204
101	102	103	104

784 Landover Cir

201	202	203 Jan	204

776 Landover Cir

201	202	203	204

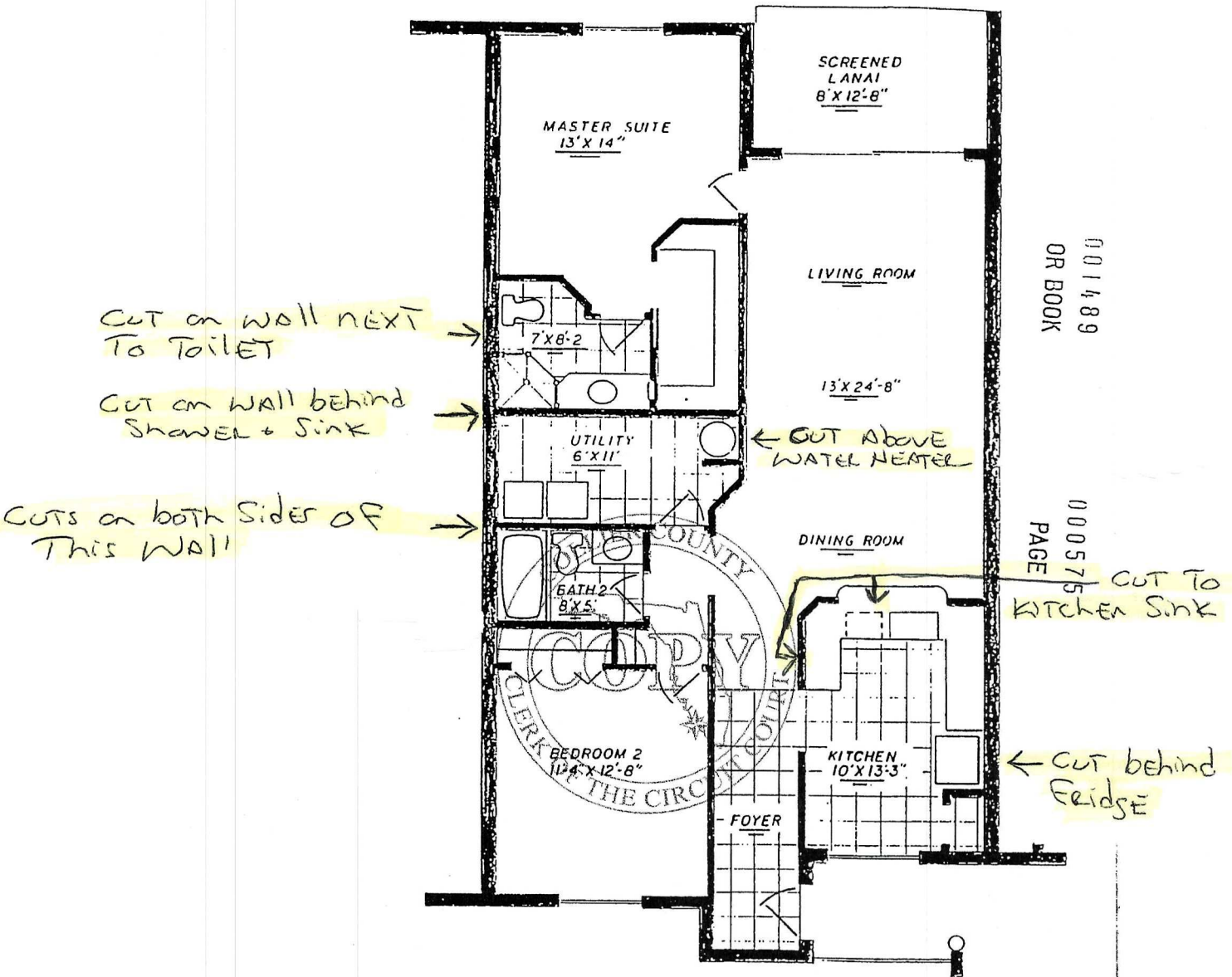
# Newcastle Re-pipe Project Readiness

Updates as of: 10/20/2022



101	102	103 Jan	104
-----	-----	------------	-----

101	102	103	104
-----	-----	-----	-----



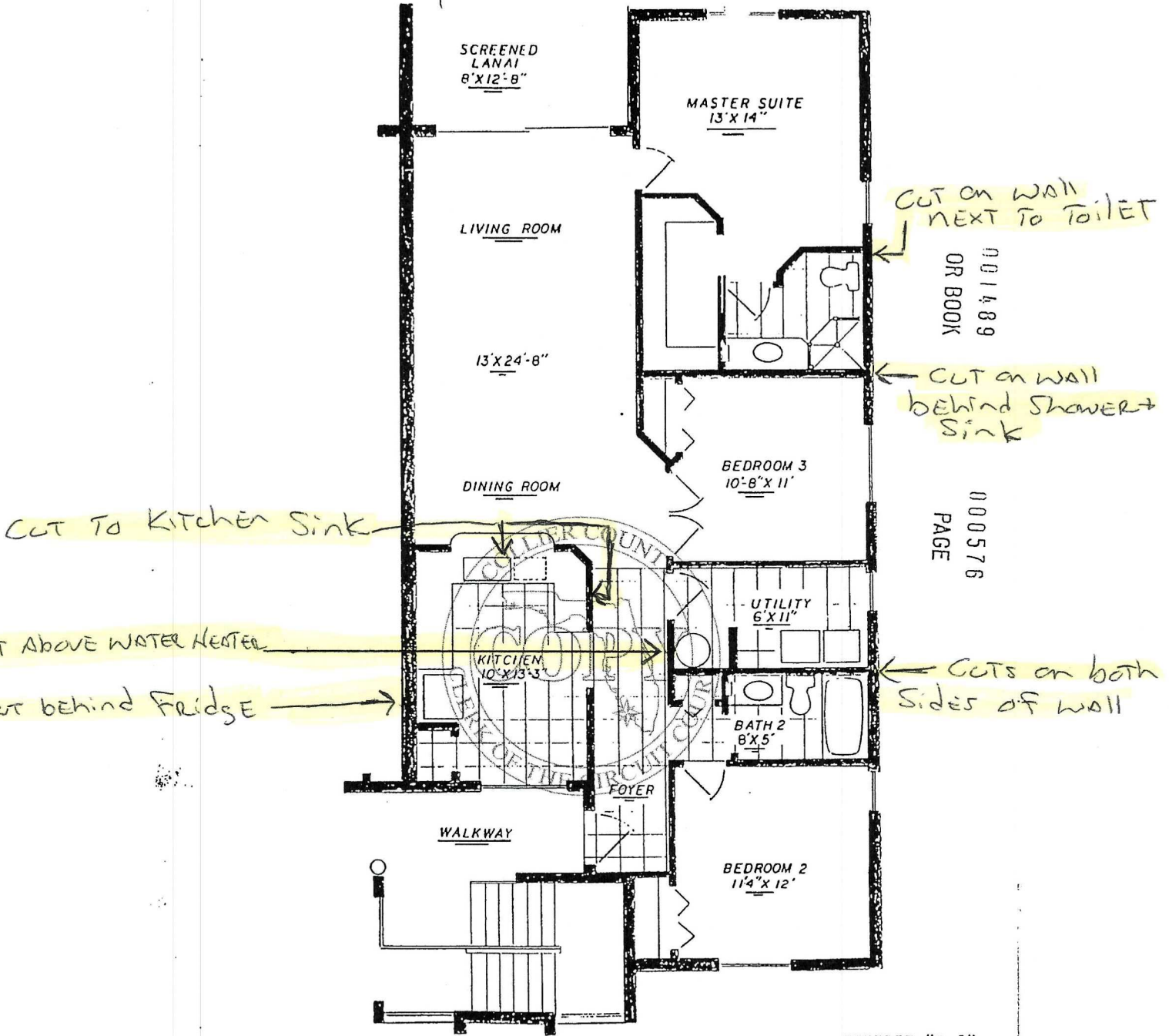
001489  
OR BOOK

000575  
PAGE CUT TO KITCHEN SINK

TYPICAL TWO-BEDROOM UNIT

EXHIBIT "B-4"

For 1<sup>ST</sup> Floor units, there will be several cuts to the ceiling



001489  
OR BOOK

000576  
PAGE

TYPICAL THREE-BEDROOM UNIT

EXHIBIT "B-5"

For 1st Floor units, There will be SEVERAL CUTS TO THE CEILING

# Current Repipe Dates Scheduled

Bldg. 709: UNITS, 101 102 104  
201 202 204  
10/17 10/18 10/19

Bldg 645: UNITS, 104  $\begin{matrix} \nearrow \\ \searrow \end{matrix}$  10/21 101 102 103  
204 201 202 203  
10/27 10/28 10/31

Bldg 661: UNITS, 102 104 101  
202 204 201  
10/24 10/26 11/21

Bldg 741, UNITS 102 103 104  
202 203 204  
11/3 11/4 11/7

Bldg 662, UNITS 101 102 103 104  
201 202 203 204  
11/8 11/9 11/10 11/3

Bldg 708, UNITS 103  $\begin{matrix} \nearrow \\ \searrow \end{matrix}$  11/14  
203

Bldg 716, UNITS 101 102 103 104  
201 202 203 204  
11/14 11/15 11/16 11/17